

WINTERGARDEN CAREER SOLUTIONS

Attention!
WINTERGARDEN AREA
OUT OF SCHOOL
INDIVIDUALS

Would you like to earn a stipend
while gaining a job skill ?

**TAKE A STEP TOWARD YOUR
FUTURE!**



JOB SKILLS

Contact Us:

(830)374-0460
118 E. DIMMIT ST.
CRYSTAL CITY, TX 78839

Reach Out Now!

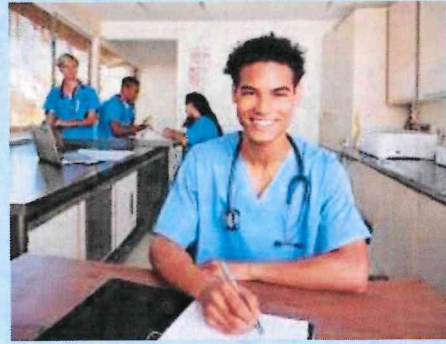


- Scan the QR code if interested!
- Ages: 18 & Up
- College/High School Graduates
- or Potential GED student
- Training tuition will be covered if eligible



Phlebotomy

Phlebotomy, also known as a blood draw or venipuncture, is a process where a needle is used to collect blood from a vein. It's usually done for lab tests but can also help treat certain blood conditions by removing extra red blood cells.

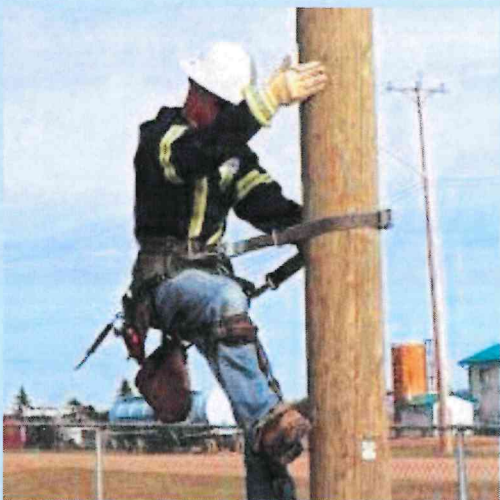


Medical Assistant

Medical assistants handle both clinical and administrative tasks. Clinically, they interview patients, record medical histories, and take vital signs. They also assist physicians during exams, procedures, and injections. In the lab, they collect and prepare samples, conduct basic tests, and report results. They provide basic wound care and sterilize medical instruments and exam rooms.

Powerline Technician

Powerline technicians install, maintain, and repair power lines, poles, transformers, and lights. They fix faulty equipment, locate power issues, and repair storm damage. Technicians work on both energized and de-energized circuits, using live-line maintenance techniques when needed. They also operate heavy machinery like aerial booms, diggers, and bucket trucks to complete their tasks.



CDL Truck Driver

Texas is a prime state for truck drivers, with low living costs, low taxes, and a booming trucking industry. Key sectors like oil, agriculture, and mining fuel its economy, relying heavily on commercial drivers. To join, you must pass the Texas CDL exam and earn your Commercial Driver's License.